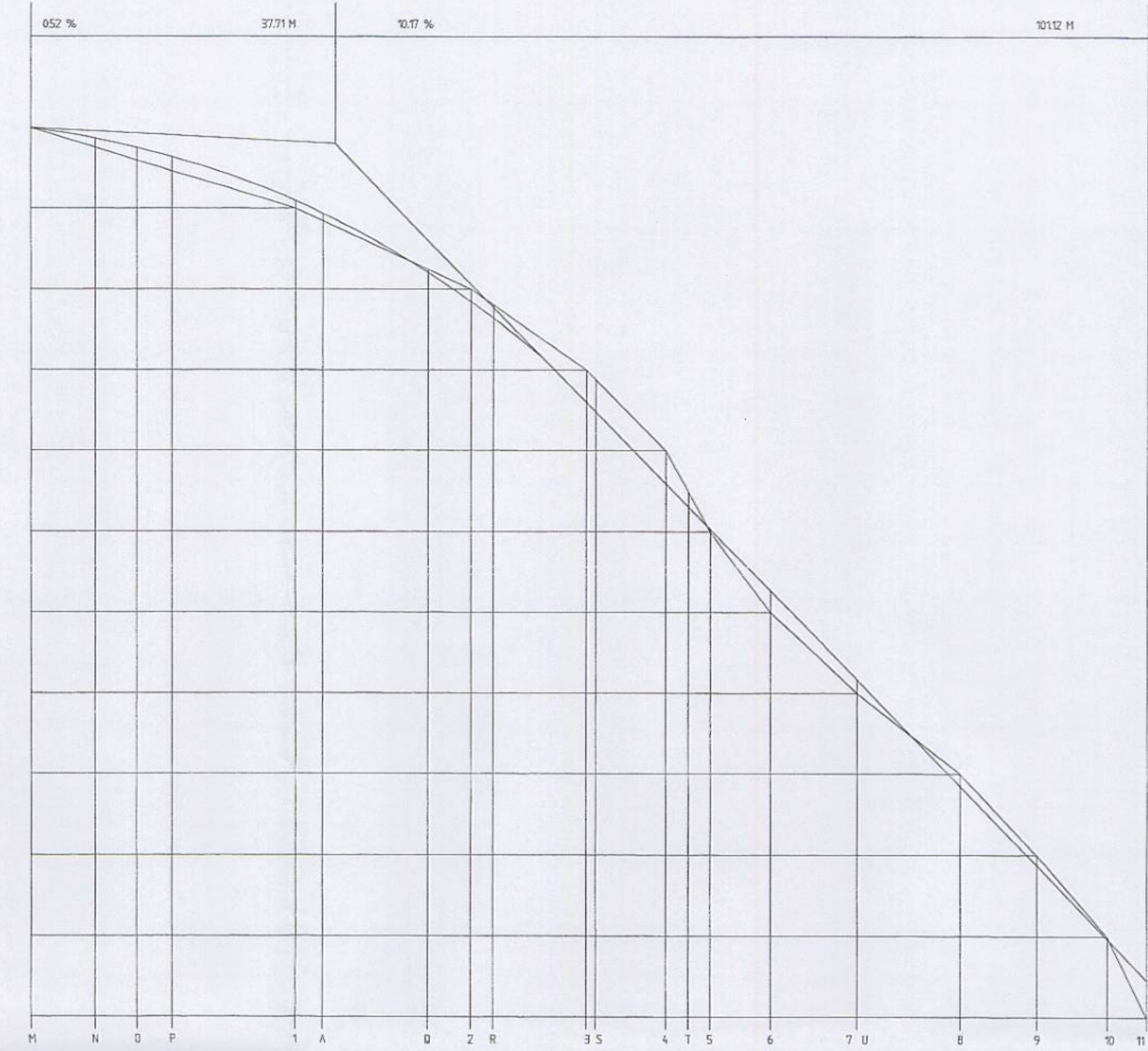
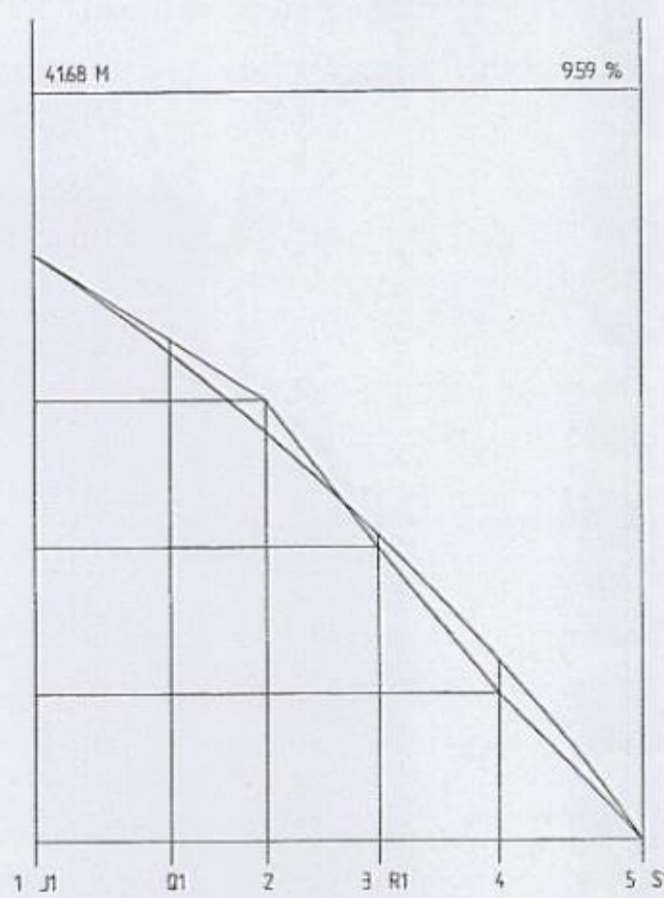


PERFIL LONGITUDINAL																							
ORDENADAS	RESANTE	42%	42	41	40	39.39	39.10	38.43	38	37.10	36.39	36.12	35.67	35.60	35.39	35.33	35.06	34.85	34.68	34.14	33.75	33.05	32.43
TERREDO	42%	42	41	40	39.33	39	38	37.73	37	36.60	36.45	36.30	36.16	36.03	36	35	34.76	34.58	34	33.64	33	32.10	
PAREDES	0.00	26.92	12.05	8.66	5.77	2.86	7.41	5.83	16.19	17.28	6.69	6.22	6.43	5.43	1.45	6.45	5.20	4.21	13.25	9.67	17.31	11.63	
A OBRAS	0.00	26.92	38.97	47.63	56.40	56.26	63.67	69.50	85.69	102.97	109.66	15.88	122.31	127.74	129.19	135.84	141.04	145.25	158.50	168.17	185.48	197.11	



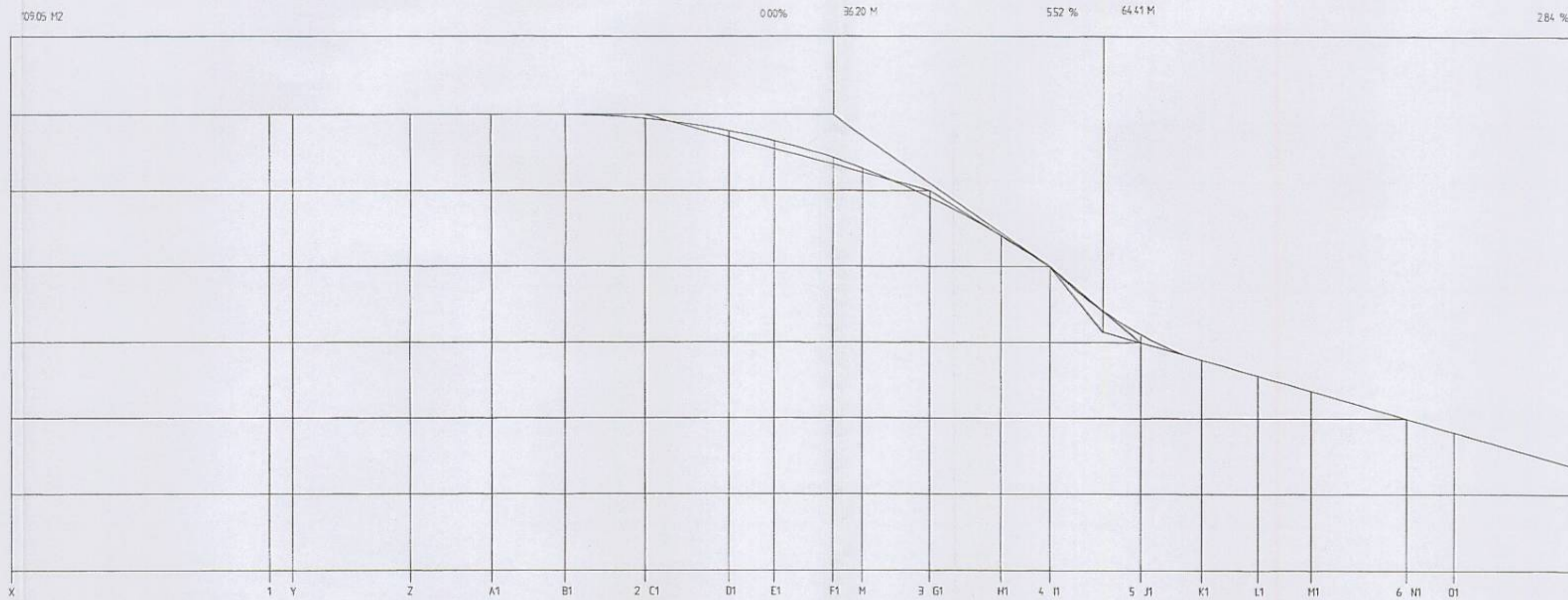
PERFIL LONGITUDINAL																					
ORDENADAS	RESANTE	43.24	43.87	43.75	43.64	43.09	42.94	42.21	41.84	41.64	40.60	40.18	39.59	39.30	39.03	38.27	37.17	35.85	34.87	33.96	33.44
TERREDO	43.24	43.76	43.59	43.46	43	42.84	42.24	42	41.80	41	40.88	40	39.48	39	38	37	36	35	34	33	
PAREDES	0.00	7.97	5.31	4.33	15.19	3.41	19.23	5.34	2.77	11.45	1.19	8.71	2.82	2.66	7.44	10.73	12.94	9.50	8.90	4.93	
A OBRAS	0.00	7.97	13.28	17.61	32.80	36.21	49.46	54.78	57.57	69.00	70.19	78.91	81.93	84.39	91.83	102.56	115.50	125.00	133.90	138.83	

ORDENADAS E1/50



PERFIL LONGITUDINAL							
ORDENADAS	RESANTE	41.08	40.33	39.78	39.08	38.22	37
TERREDO	41	40.41	40	39	38	37	
PAREDES	0.00	9.38	6.68	7.68	8.23	9.09	
A OBRAS	0.00	9.38	16.06	23.74	31.97	41.06	

ABSCISAS E1/500



PERFIL LONGITUDINAL																					
ORDENADAS	RESANTE	44	44	44	44	44	43.92	43.78	43.63	43.39	43.24	42.86	42.36	42	41.08	40.77	40.56	40.36	40	39.82	39.31
TERREDO	44	44	44	44	44	44	44	43.70	43.55	43.35	43.24	43	42.40	42	41	40.77	40.56	40.36	40	39.82	39.31
PAREDES	0.00	34.55	31.06	15.48	10.92	9.67	10.57	11.28	5.86	7.62	4.12	9.11	9.45	6.54	11.99	8.02	7.40	6.98	12.98	6.31	17.95
A OBRAS	0.00	34.55	37.61	53.09	64.01	73.68	84.15	95.43	101.29	108.91	119.03	122.14	131.59	138.13	150.12	158.14	165.54	172.52	185.50	191.81	209.76

Este documento forma parte do expediente n.º
 - 4597/411 -
 aprobado INICIALMENTE con esta data
 Vigo, 17 de ABRIL de 1998
 O SECRETARIO DE URBANISMO
 Aído: Fco. Javier Garcia Martinez

Este documento forma parte do expediente n.º
 - 4597/411 -
 aprobado DEFINITIVAMENTE con esta data
 Vigo, 28 de JULIO de 1998
 O SECRETARIO DE URBANISMO
 Aído: Fco. Javier Garcia Martinez



CONCELLO DE VIGO

XERENCIA MUNICIPAL DE URBANISMO

OFICINA DE PLANEAMENTO E XESTION

CONVENIO DE COLABORACION C.O.A.G. - CONCELLO 1996

PLAN ESPECIAL DE MELLORA DO NUCLEO RURAL
 MATOCA - 12.05.C
 (Documento a Aprobacion Inicial)

Plano de : PERFIS DO VIARIO II
 Plano num. : 2.05
 Escala : 1 / 500

Arquitectos redactores : F. JAVIER ALONSO-DAVILA
 ARSENIO PIÑEIRO SANTOS
 Data : OUTUBRO/1997